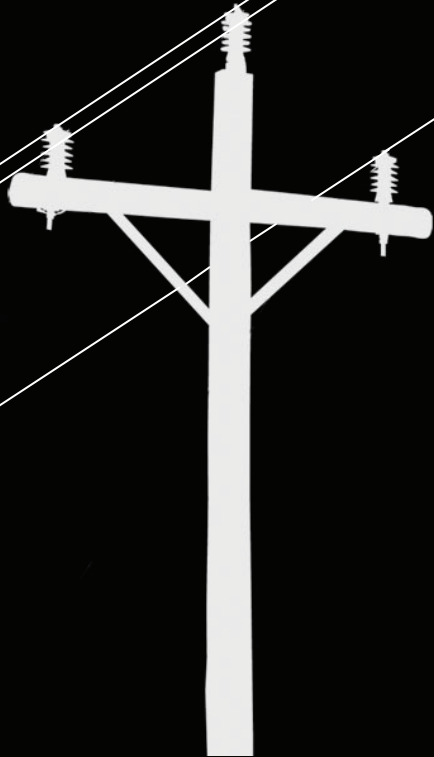


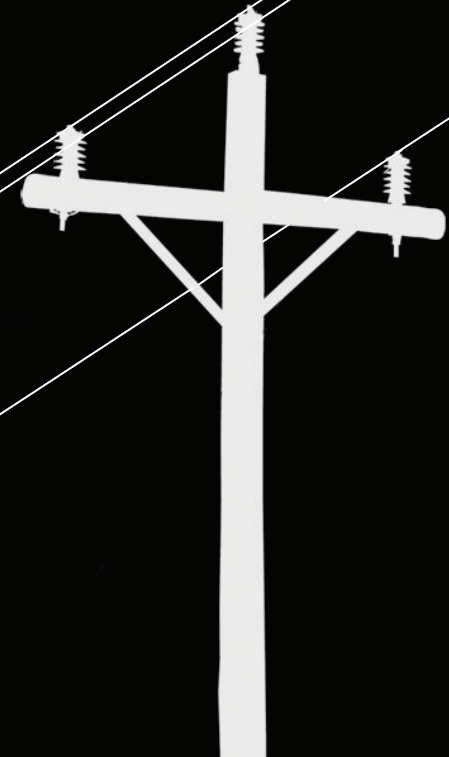
# MWEC

BOARD OF DIRECTORS



# MWEC

BOARD OF DIRECTORS



## CONTACT US

If you are interested in becoming a director for Mountrail-Williams Electric Cooperative or have any questions, let us know.

[WWW.MWEC.COM](http://WWW.MWEC.COM)

P: 800.279.2667 F: 701.577.3777

P.O. Box 1346, Williston, North Dakota 58802

## MAKE A DIFFERENCE TODAY

Get involved with your co-op and make a difference today. Members of electric co-ops express higher than average levels of customer satisfaction because co-ops are different. Consumers are the owners so when members have concerns, they talk to their neighbors, their board of directors.



# LEARN ABOUT THE MWEC BOARD

## MEET MWEC

*Mountrail Rural Electric and Williams Rural Electric Cooperatives joined forces in 1991 to better serve their members, forming what is now Mountrail-Williams Electric Cooperative (MWEC).*

MWEC prides itself on meeting the changing needs of its membership. While continuing to grow every day, MWEC now owns and maintains over 3,800 miles of line to its 5,000 members. In the midst of an oil boom, MWEC now supports nearly half of the rigs in the area.

### Who is on the board?

The board is made up of nine cooperative members.

### What does a director do?

The board is responsible for establishing policies, approving plans and budgets and delegating authority to the General Manager to execute and carry out the plans and policies of the cooperative.

### When does the board meet?

Regular meetings are held the last Wednesday of each month in the Williston office. In addition to regular board meetings, directors are required to attend occasional regional and national meetings as well as educational seminars. For a complete list of upcoming meetings and events, visit [www.cooperative.com](http://www.cooperative.com) or [www.ndarec.com](http://www.ndarec.com).

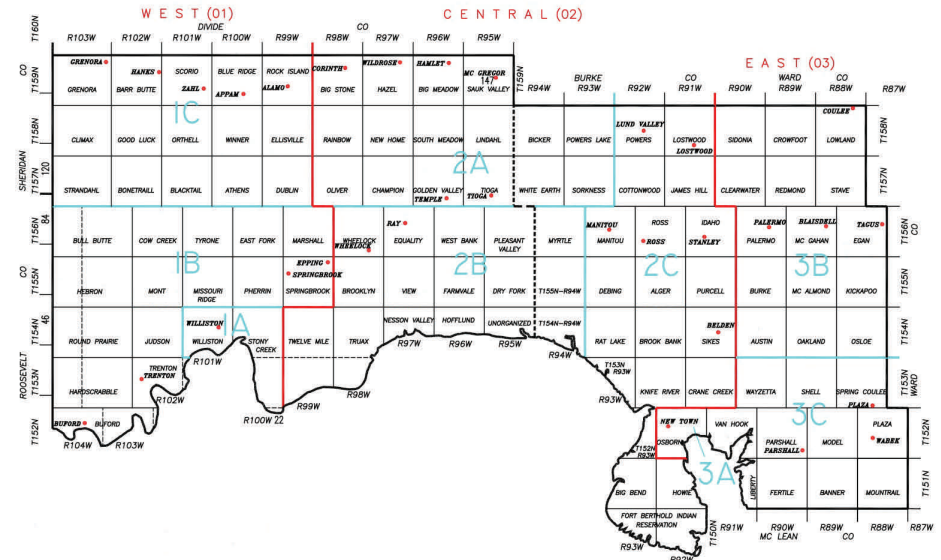
## NOMINATION AND ELECTION

*To become or remain a director, you must be a member and resident in the MWEC service area within the vacant district. You must not be employed by or have any financial interest in a business competing directly with the cooperative.*

If you or someone you know is interested in becoming a director, let us know. You can be nominated in one of two ways.

1. By a petition signed by 15 members from your district, turned in 30-90 days prior to the annual meeting.
2. By nomination from the floor during the annual meeting.

## DIRECTOR DISTRICTS



## A GREAT OPPORTUNITY

Not only is being a board member an important leadership role within the cooperative, but it's a great way to get involved in the community. Whether it's helping to serve a meal or simply shaking hands, the community loves to see MWEC directors getting involved.

The directors also have a unique opportunity to meet and work with directors from all over the country at various meetings and events.

## COMPENSATION

Directors are paid a stipend for each meeting attended, as well as compensation for any travel expenses.

